



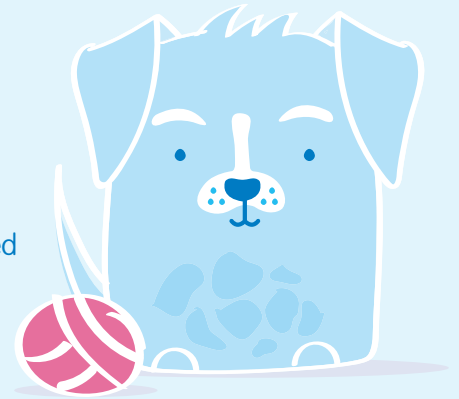
Pets change lives  
We change theirs

# Make your own Enrichment toys

Fun to make and even better to play with, enrichment toys like these are great for a pet's welfare.

These toys allow animals to exhibit natural behaviours, helping pets stay active and mentally stimulated. This is one of the five welfare needs every domestic animal has the right to, along with; living in a suitable environment, eating a suitable diet, being housed with or apart from other animals, and being protected from pain, suffering, injury and disease.

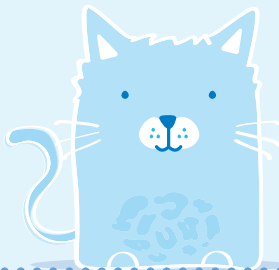
All of these toys can be created using easily accessible materials, **but please make sure children are supervised by an adult while making all of the toys.**



## Cat puzzle ball

### You will need...

- Cardboard toilet roll inner
- Scissors



1 Cut the toilet roll into four 1.5cm rings.



2 Insert the first ring into the second to form an X shape, then insert the third and fourth rings to form a ball.

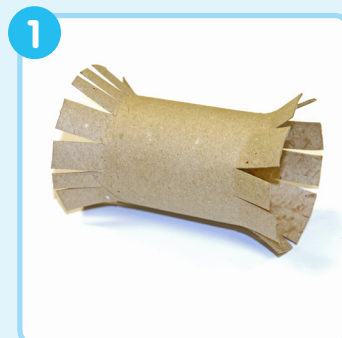


3 Poke a few of your cat's favourite dried treats through the gaps. Leave space for the treats to fall out as your cat plays.

## Tunnelling fun for small pets

### You will need...

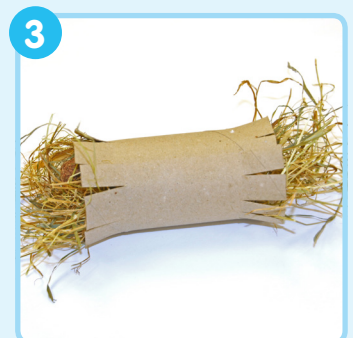
- Cardboard toilet roll inner
- Soft digestible hay
- Scissors
- Treats (optional)



1 Cut notches of varying thickness on each end of the toilet roll about 2cm long. Bend the flaps outwards.



2 Cut one incision down the entire length of the tube to avoid your pet getting stuck.



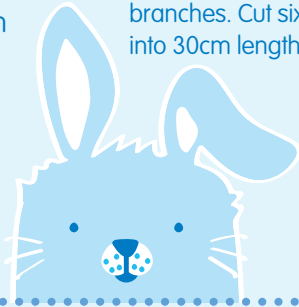
3 Fill the roll with hay – you can even add a few treats if you like. Place in your pet's play area or cage.

Please make sure children are supervised by an adult while making all of the toys.

## Rabbit willow ring

### You will need...

- Thin strips of willow – for your pet's safety check the willow is untreated (common with shop bought willow from florists) and hasn't been sprayed with pesticides
- Scissors or garden clippers



1 If you have cut your willow fresh, remove leaves from the branches. Cut six willow twigs into 30cm lengths.



2 Make a ring out of one of the twigs and twist the ends together – if your willow isn't bendy enough, soaking it in water overnight should make it more flexible. You may also be using willow that is too thick so remember to use the very thin ends of the branch.



3 Take another twig and twist around the first ring. Repeat this process until you have used all your twigs. Tuck in any ends that are sticking out.

## Destruction box for dogs

### You will need...

- A small or medium sized cardboard box
- Various cardboard and paper – egg box, shredded paper, toilet roll inners
- Your dog's favourite dried treats



1 Scrunch up or shred the paper.



2 Fill your box with the cardboard, paper and egg box, hiding treats throughout the box.



3 With your supervision let your dog have fun finding the treats. Watch out – things are likely to get very messy!



Let's get making!



Pets change lives  
We change theirs

[bluecross.org.uk](http://bluecross.org.uk)

Registered charity no. 224392 (England and Wales), SC040154 (Scotland).

